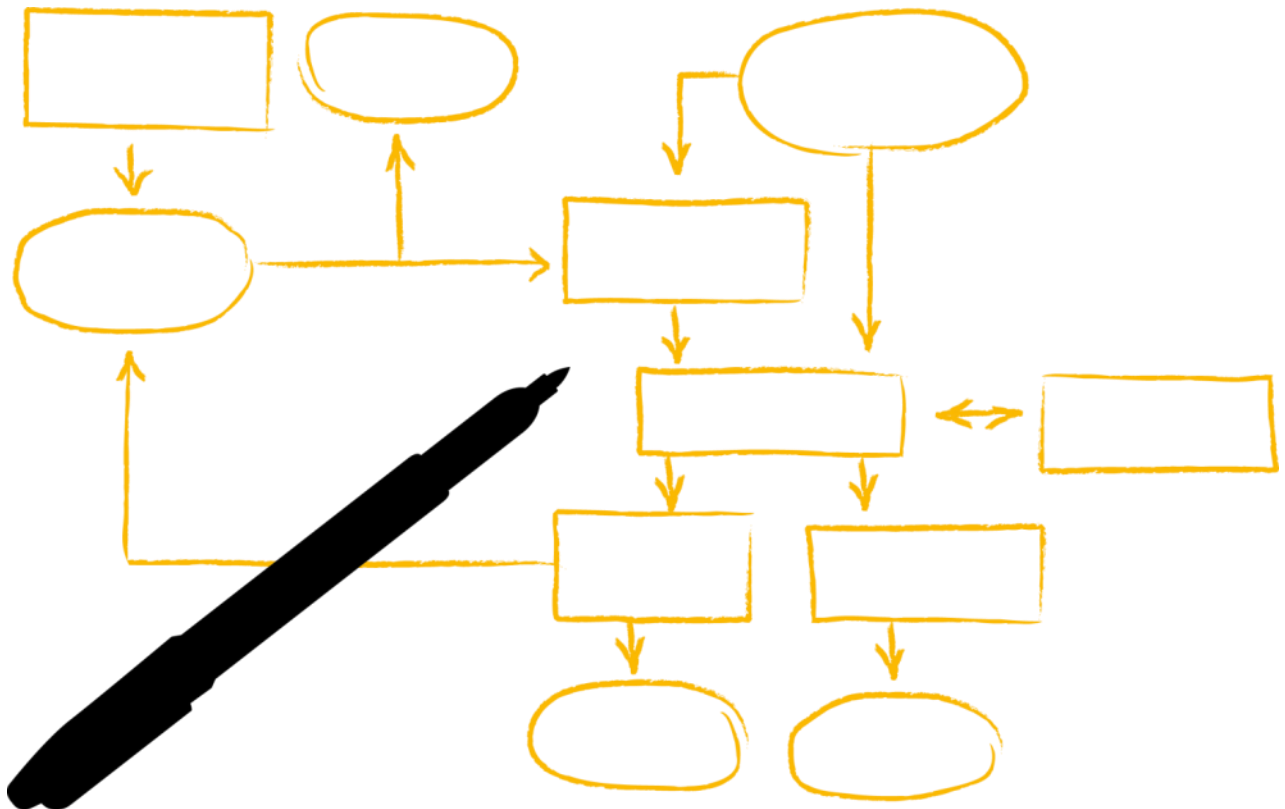


SAP Project and Portfolio Management Overview

SAP Japan
2015.03.24



Global Trends – The “New Normal”



Economic Uncertainty

Maximize return on investments

Continued pressure to reduce costs while maximizing benefits



Shifting Priorities

Do the right things fast

Reduce time to value while incorporating change



Constrained Resources

Do more with less

Forced to do more with existing resources while also being held accountable for the implications

The number one goal for companies around the world is to reduce **“time-to-value”** for new project investments

Enterprise Portfolio and Project Management

Corporates Need to Control Three Key Areas



Portfolio Management

Maximize return on investments

Precise investment planning and close-loop monitoring



Project Management

Do the right things fast

Full visibility in project performance



Resource Management

Do more with less

Complete transparency of the availability of critical resources

Enterprise Portfolio and Project Management Platform

One Portfolio and Project Management solution serving several business scenarios

Integrated into SAP Business Suite; ERP, PLM, Financials, Resource and Budget management

RDS Available

“Enterprise” Portfolio and Project Management

Portfolio Management

Resource Management

Project Management

R&D, Innovation

“Optimize strategic resource & financial management of the innovation process”

IT

“Help IT organizations to align activities & resources with business strategy”

Capital

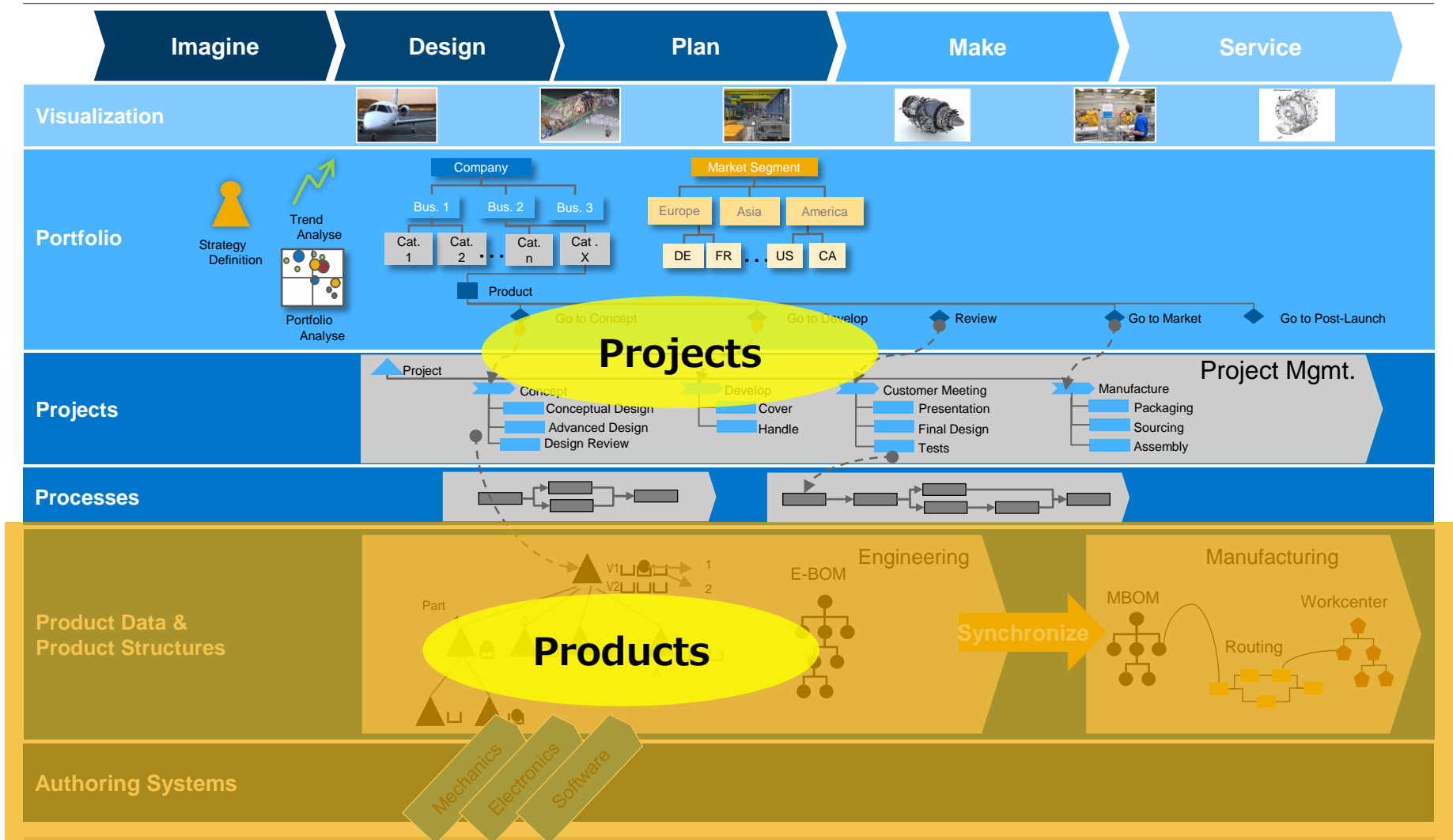
“Manage and control enterprise wide, project related investments”

Commercial

“Manage customer project lifecycle from opportunity to billing and closure”

SAP PLM solutions for R&D and Engineering

Big Picture



PLM & PPM Foundation: Search, DMS, QM, Reporting, Access Control, Collaboration, Costing, MDG-M, Compliance, ...

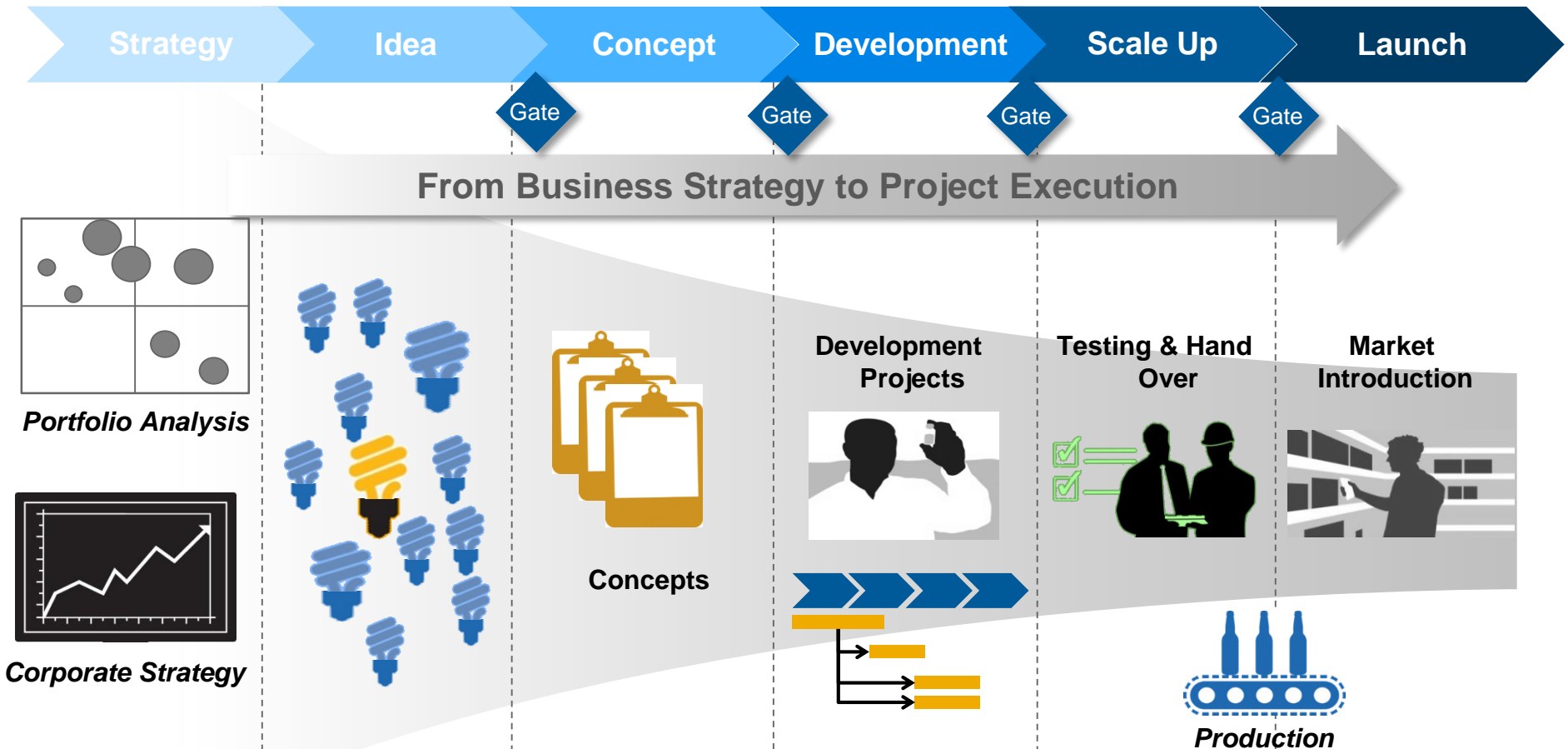
Innovation Project Lifecycle

Link Business Strategy to Project Execution



Innovation Project Lifecycle

Link Business Strategy to Project Execution



SAP Portfolio & Project Management 6.0

SAP Strategy
Management

SAP
Innovation
Management

SAP PLM

SAP Manufacturing

SAP FI

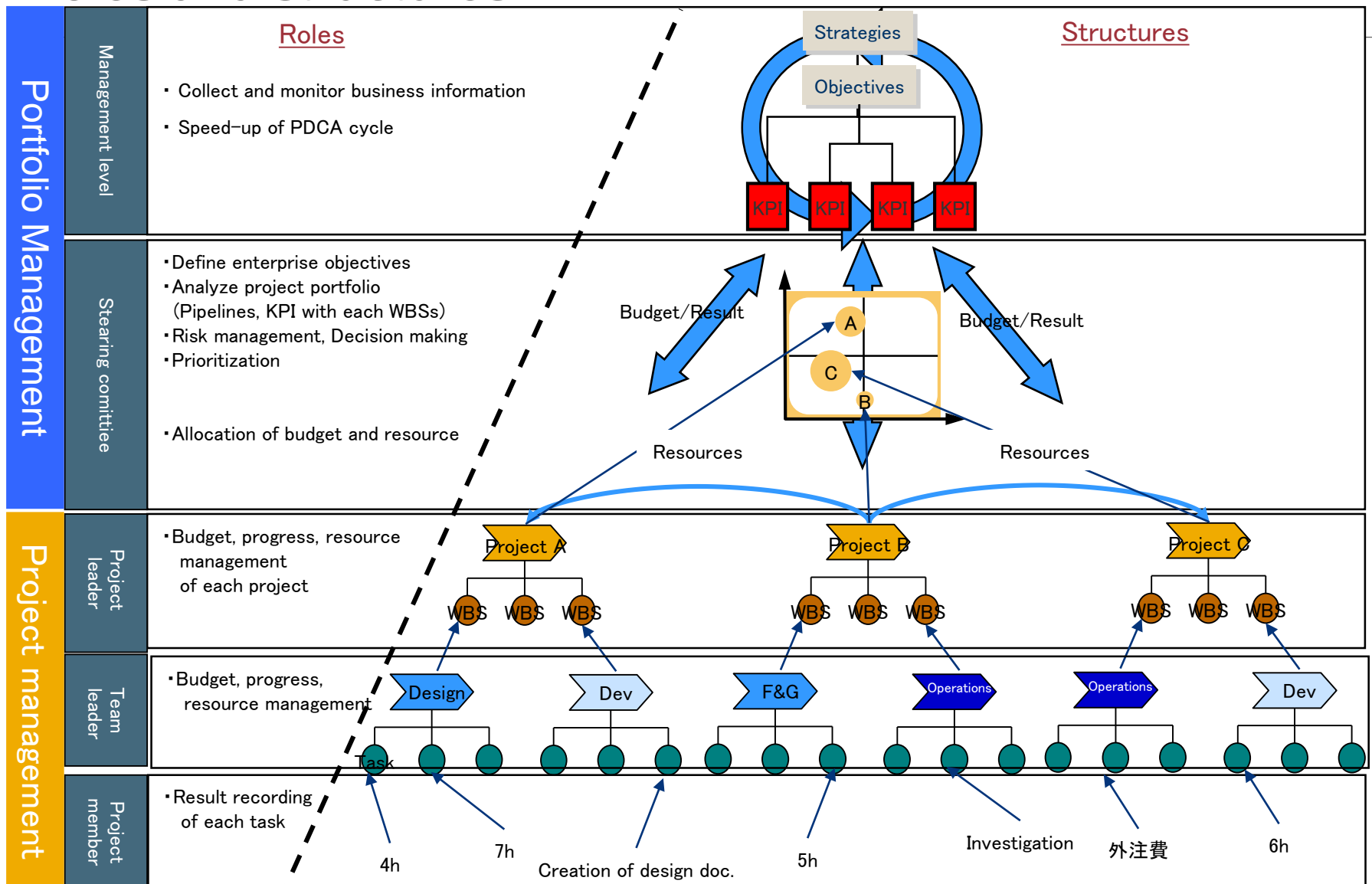
SAP HR

SAP QM

SAP CRM

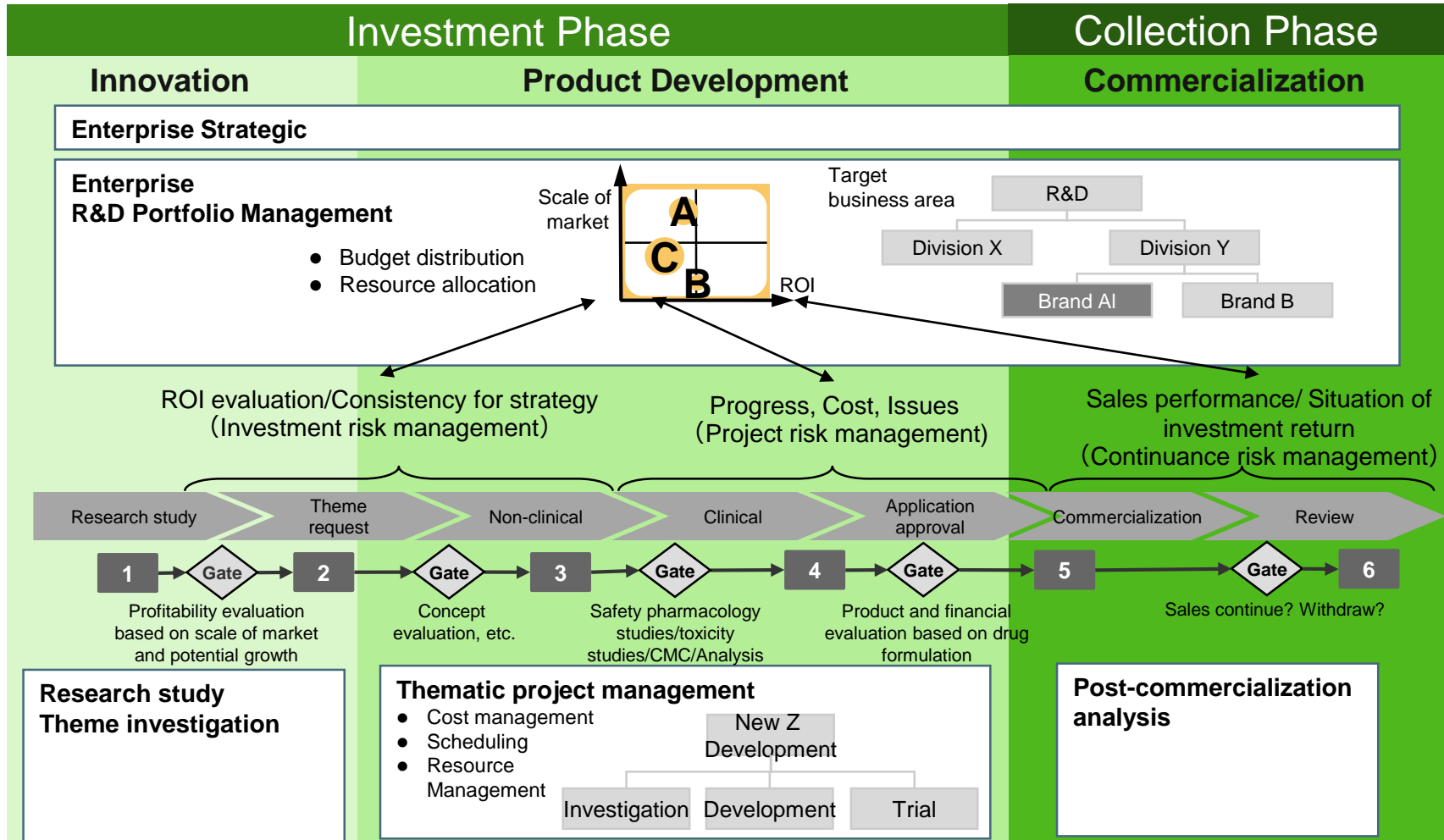
Level

Project Portfolio Management Roles and structures



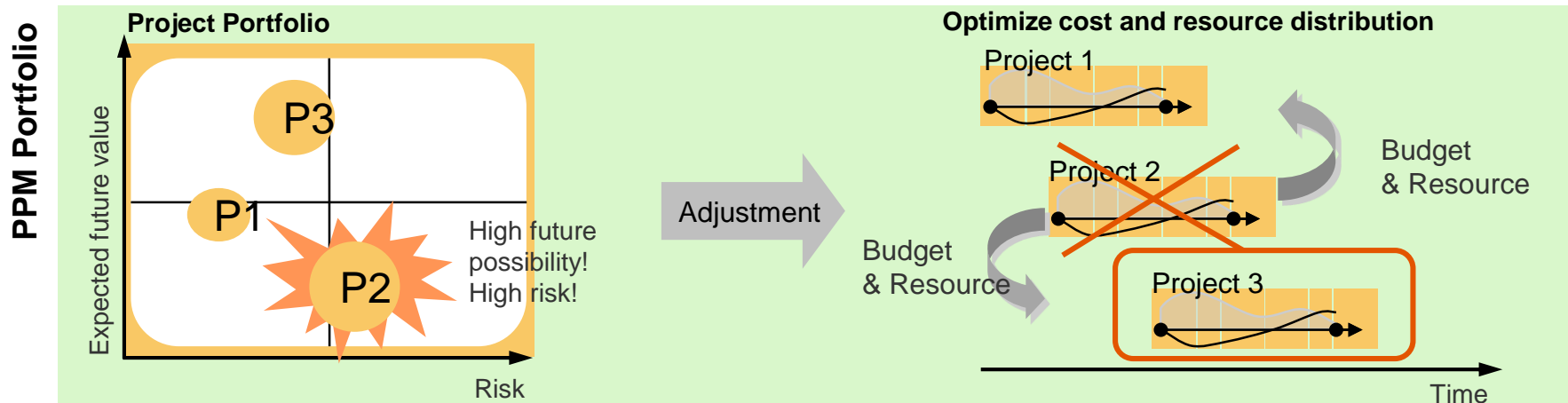
Project Portfolio Management Overview

PPM Portfolio supports management Decision Making for the most suitable & strategic distribution of budget and resource.



Portfolio management

PPM Portfolio makes it possible to optimize budget and resource distribution for multiple projects. PPM Project also supports individual project planning and execution.

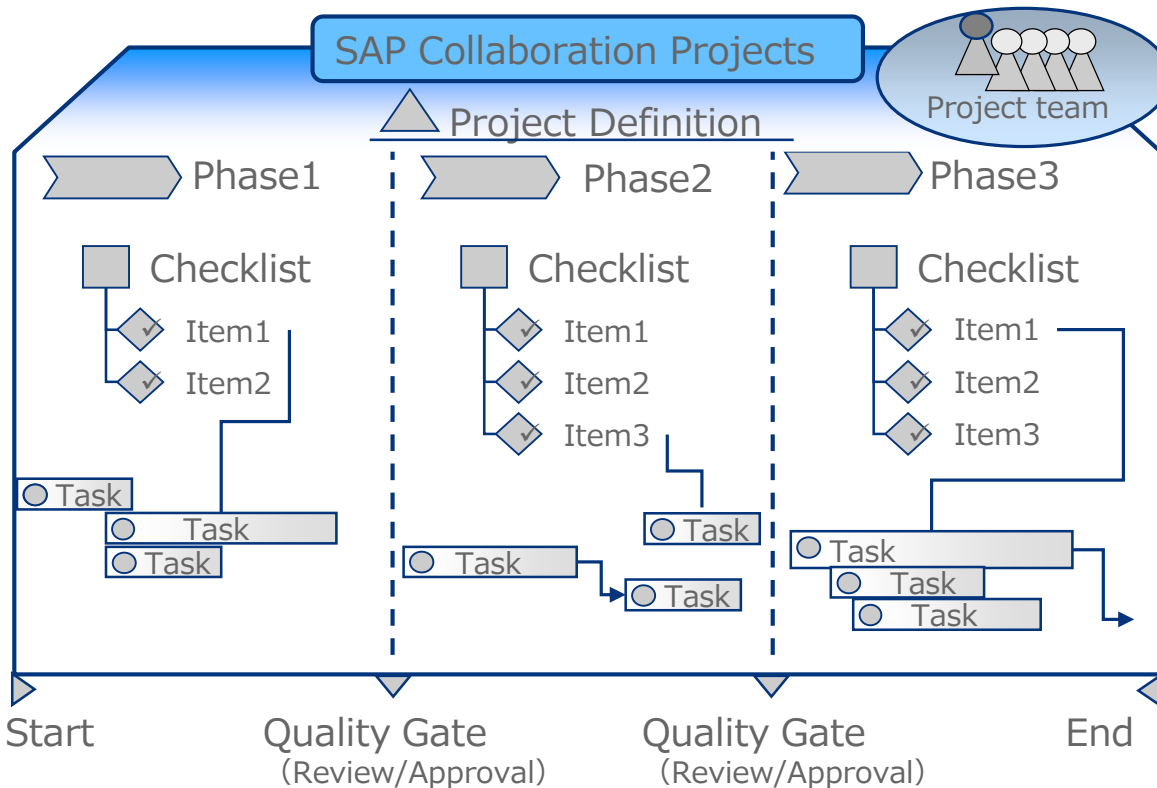


Portfolio Management

- Precise investment in most promising programs and products
- Monitor portfolio performance
- Alignment of business strategy and execution
- Reduce risk by compliance with standards, corporate policies, and best practices

Project management

Realization of exact progress management on the quality gate of each phase.
It reviews tasks and checklist items with time duration/limitation, checking outputs of documents or reports, and supports decision making go or no-go.



Schedule planning/Result management

- Task definition, responsible person, relationship between tasks
- Milestones
- Auto-calculation of schedule
- Progress management of results

Phased management(ex;design review)

- Approval points
- Approval process
- Criterial of evaluation(ex; DR)

Project Template

- Standardization of process
- Pre-define of operational items

Workflow function

Integration of document management

- Management of outputs, related to each tasks, sharing outputs

Multi-language

- Share and publish information across sites globally

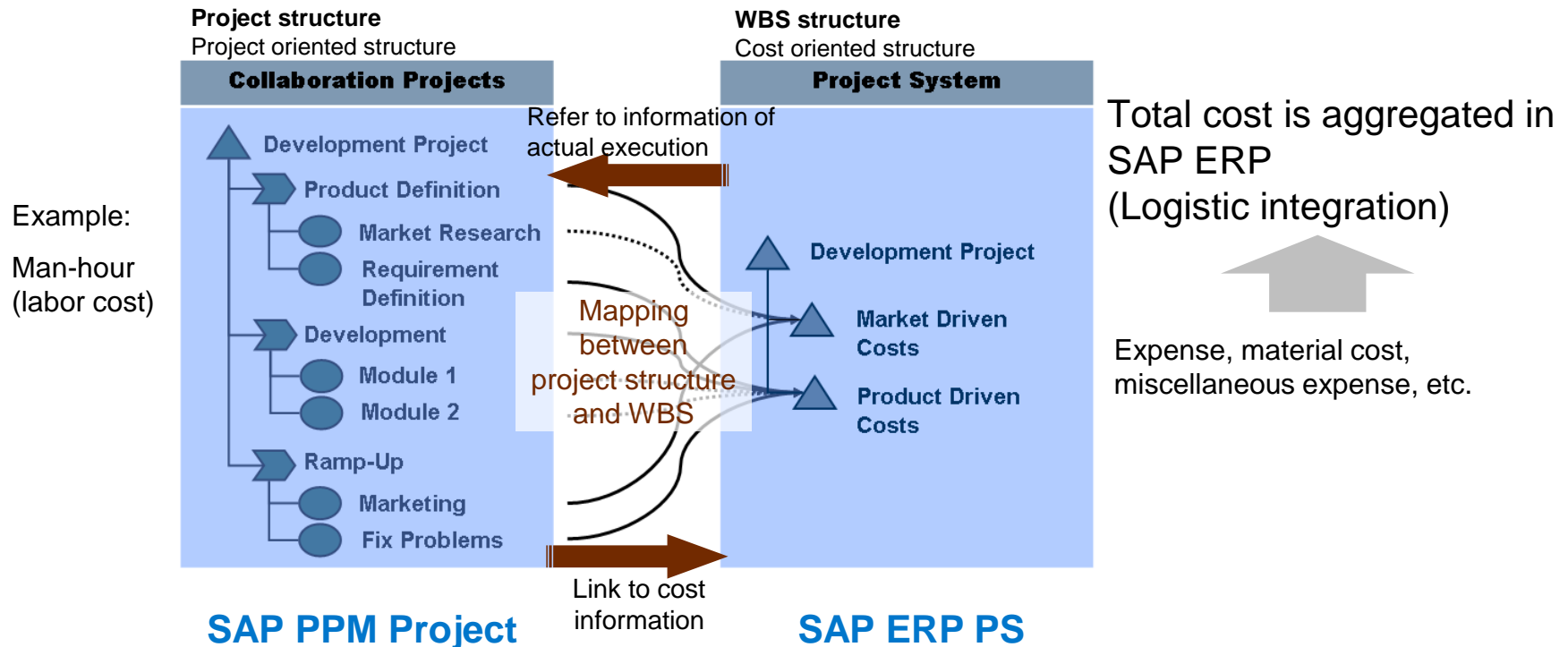
Integration with ERP

Project process management

- Project planning
- Project execution management considering process & progress of time/schedule, budget and scope

Cost management

- Cost planning/Budget planning(detail)
- Cost execution management



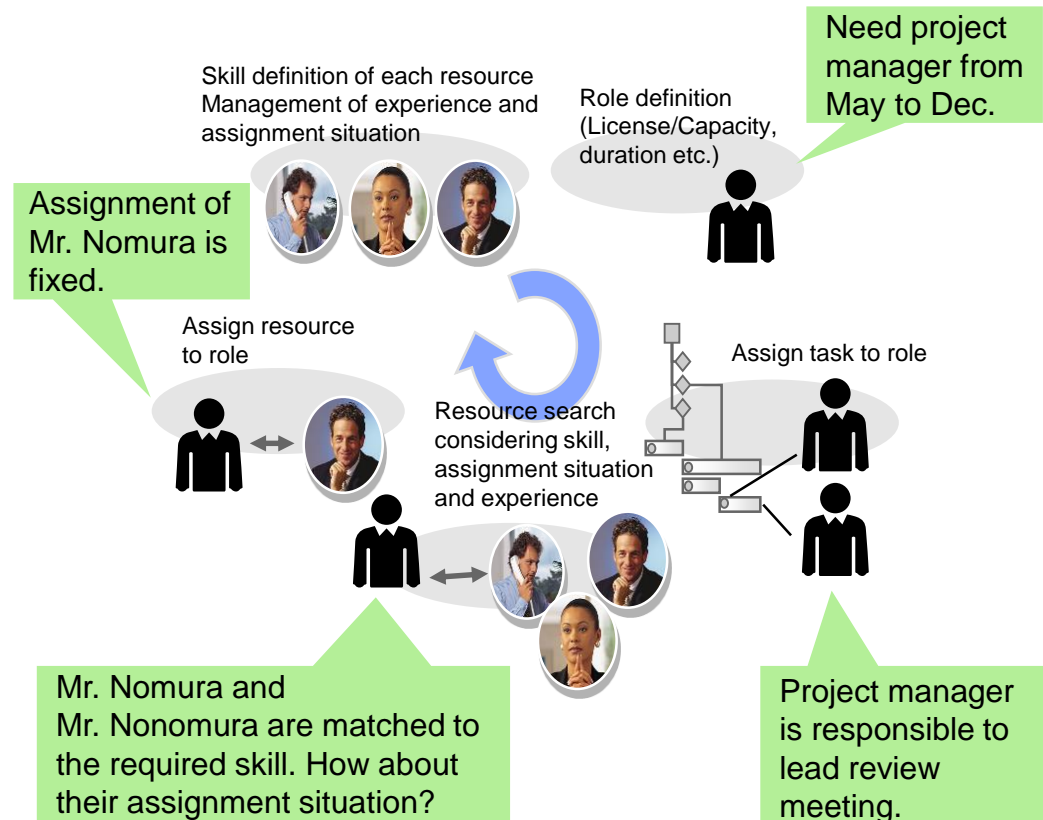
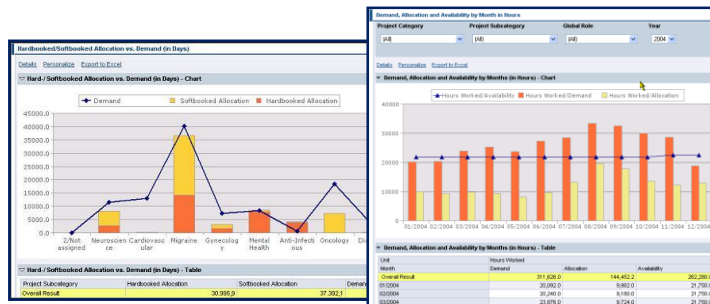
Resource management

Resource Management is based on the concept of planning and staffing with enterprise overviewing from a point of mid-term forecasting. This is referring to skill of each resource and recorded actual data aggregation.

You can do resource planning and staffing to multiple projects bundled with portfolio, this is also available to individual project.

Main purpose of resource management

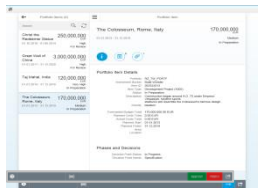
- To recognize resource requirement of individual project and assignment condition, nearest and mid-term future.
- To manage skills of employees and recognize assignment condition.
- Integration with HR systems



Enterprise Portfolio and Project Management by SAP

Solution Components

SAP Fiori

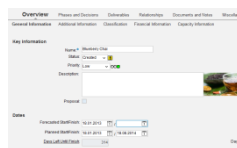


Commercial Project Management 1.0(optional)

Financial Planning
Workspace
Issue and Change
Management

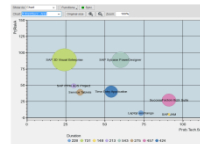
SAP Portfolio and Project Management 6.0

Portfolio Management



Initiate ↓

Analytics



↑ Aggregate

Project Management

Project Planning and Execution
Monitoring
Progress Tracking

SAP Innovation Management 1.0

Idea Management

Campaigns
Idea Collection
Idea Assessment
Expert Finder

3rd party Proj. Mgmt



Others

“Managing and monitoring the portfolio & programs”
Strategic Level

“Project Management and Execution”
Tactical Level

SAP ERP

Sales & Logistics

SD/CRM
PP/SCM
MM/SRM

R&D

PLM
EHS

Resources

HR
MRS
Time (CATS)

Financial Data

Project System(PS)
FI/CO

Integrate

“Core enterprise processes & Activities”
Operations - Level

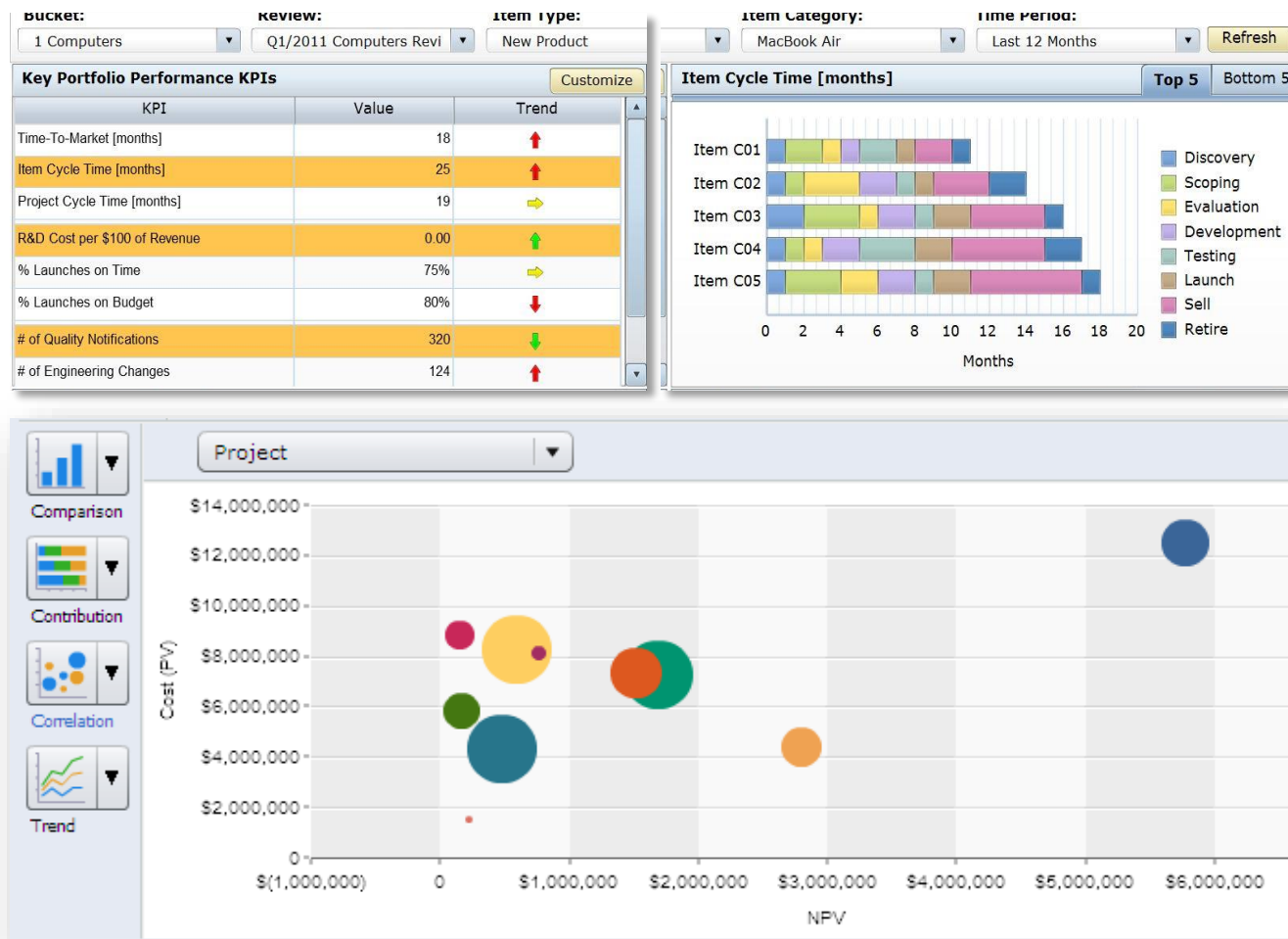
Portfolio Analyze

Assess your Portfolio Performance

You can use PPM standard report but it is possible to create customer original report with SAP BW and SAP BO.

Portfolio Analysis

- Analyze your Portfolio of Products and Projects
- KPI Monitor
 - Planned / Actual Schedule
 - Costs / Budget
 - Risk
 - NPV
 - ROI
- Alignment of capital / operational spend and strategic goals
- Compare high-level project demand and with available capacity



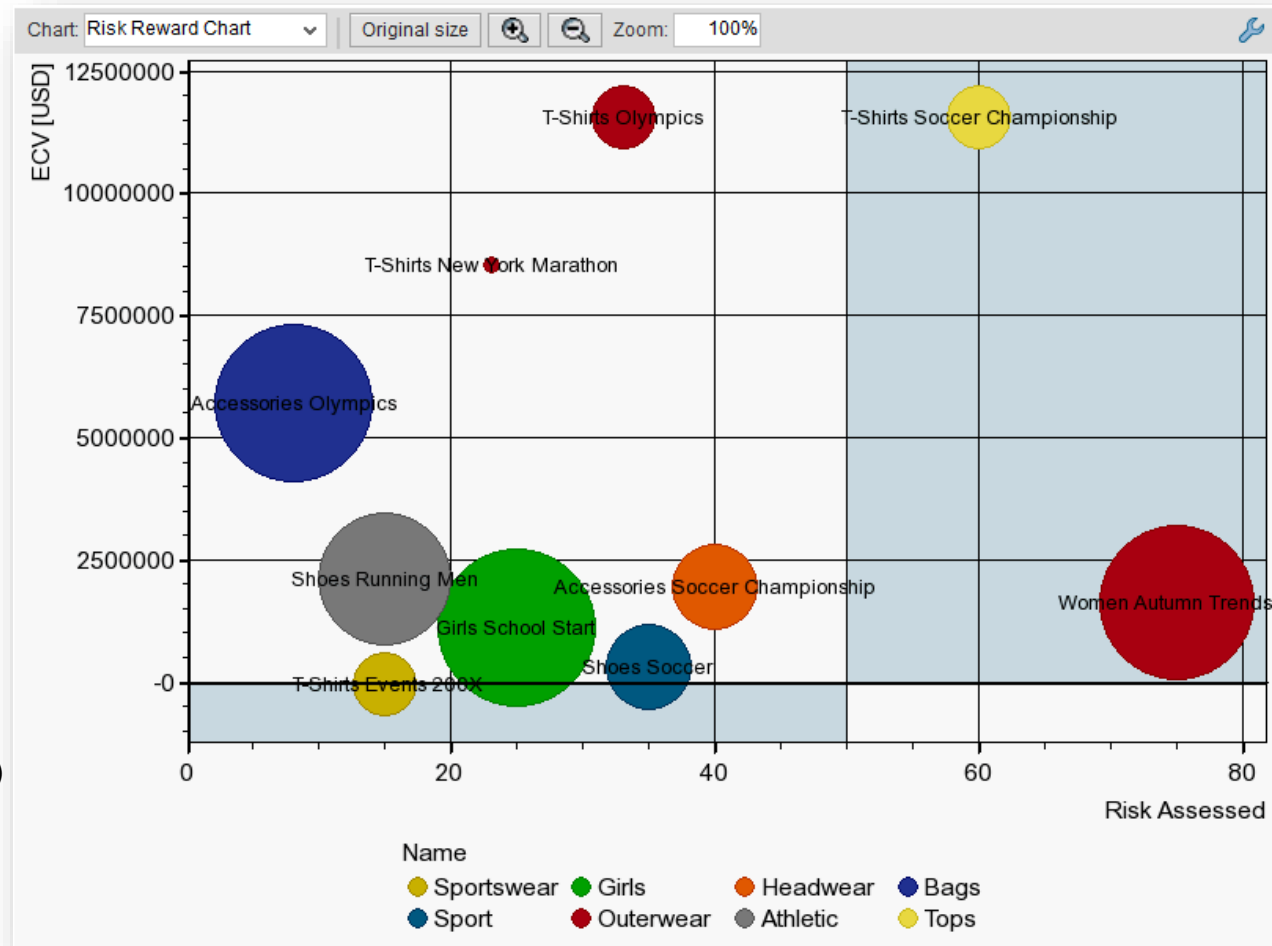
Support of decision making

Handling Multiple Scoring Methods

Easy to visualize grouped and listed evaluation items, which is important for decision making. Dashboard shows scoring based on pre-defined criteria and priority.

Portfolio Analytics

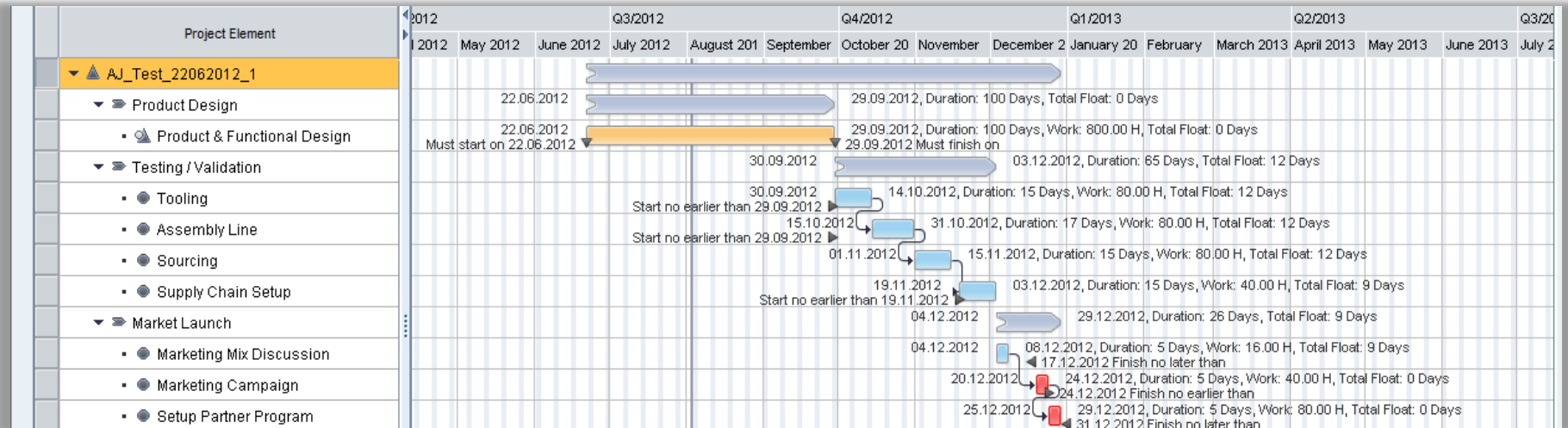
- Dashboards and Charts embedded in application
- Authorizations via Access Control Lists
- 3 Levels of Configuration
 - IT Admin
 - Business
 - User
- Bubble Charts, Time Lines, Bars, Lines etc.
- Filtering
- Optional Integration with Business Objects
 - Excelsius (Dashboards)
 - Explorer (Mobile devices)



Planning of project execution

Structure and Schedule

Define project structure for project planning. Use Gantt chart for scheduling is available.



Project Structuring and Planning

- Phases
- Tasks
- Milestones
- Responsibilities
- Relationships
- Deliverables & Check List items

Phase	Create	Include	Delete	Schedule	Check	Aggregate	Add to Favorites	Copy to Forecasted	Language: English
Project Element	Sev...	Critical Path	Responsible Role	Duration	Responsible	Work	Unit		
▼ ▲ SAP Sybase PowerDesigner	◇		IT Project Manager	230	Susan Porter	0,00			
▼ ► Project Preparation	◇		IT Project Manager	45	Susan Porter	0,00			
● Introduction & Clearing	◇	✖	IT Project Manager	10	Susan Porter	10	Person Day		
● Technical Requirements	◇	✖	IT Technology Engineer	15		15	Person Day		
● IT Project preparation	◇	✖	IT Project Manager	20	Susan Porter	20	Person Day		
▼ ► Business Blue Print	◇		IT Project Manager	38	Susan Porter	0,00			

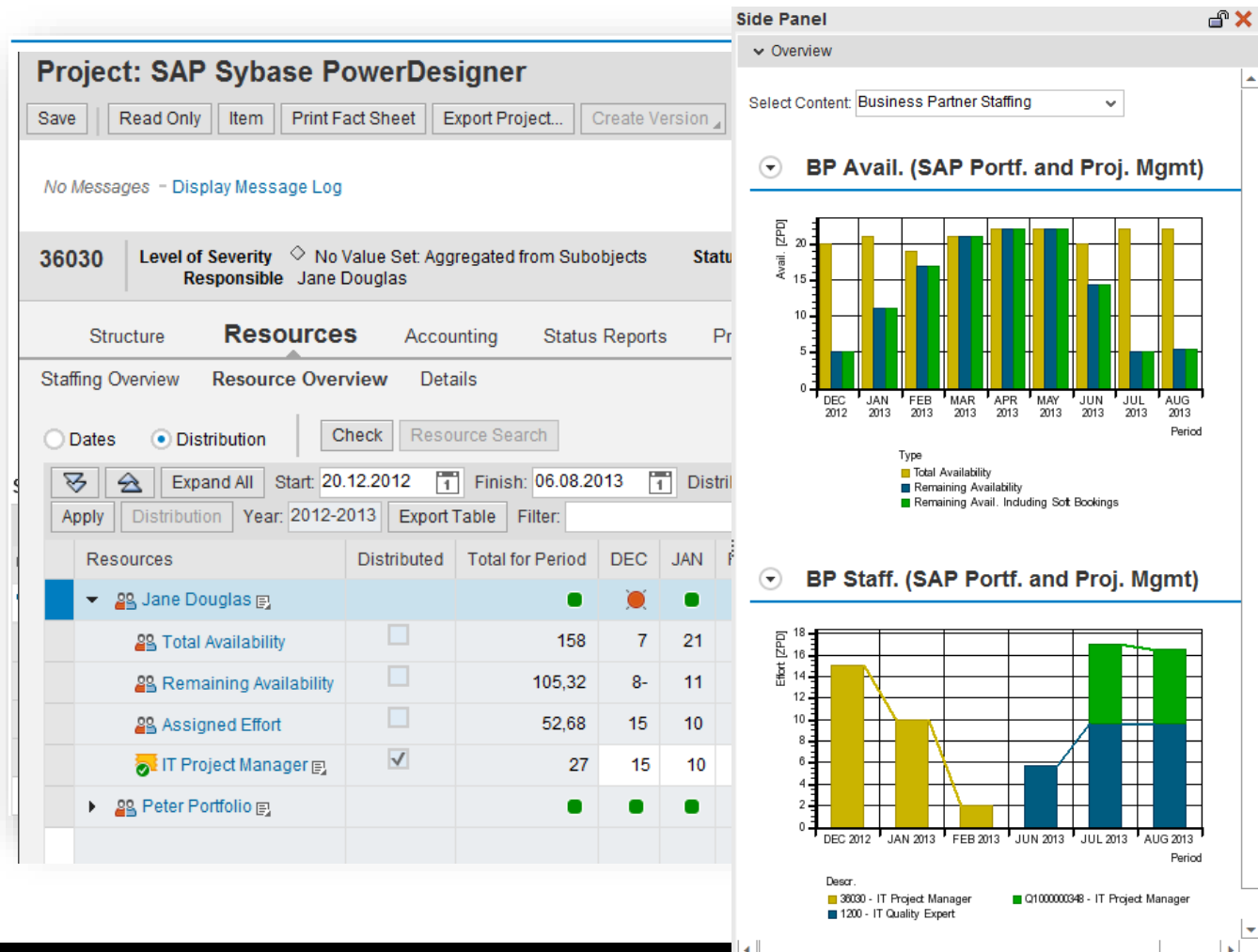
Resource allocation

Project Staffing

Multi-project overviewing staffing function. You can assign and allocate optimized resource with it.

Project Staffing

- Support of multiple staffing processes
 - Direct Staffing
 - Resource Manager
 - Candidate Manager
- Workflow and approval process
- Out-Of the box integration with SAP HR system
- Resource Search
 - Availability
 - Skill Set
 - Organization
 - Location



Execution of project

Monitor Execution and Project Performance

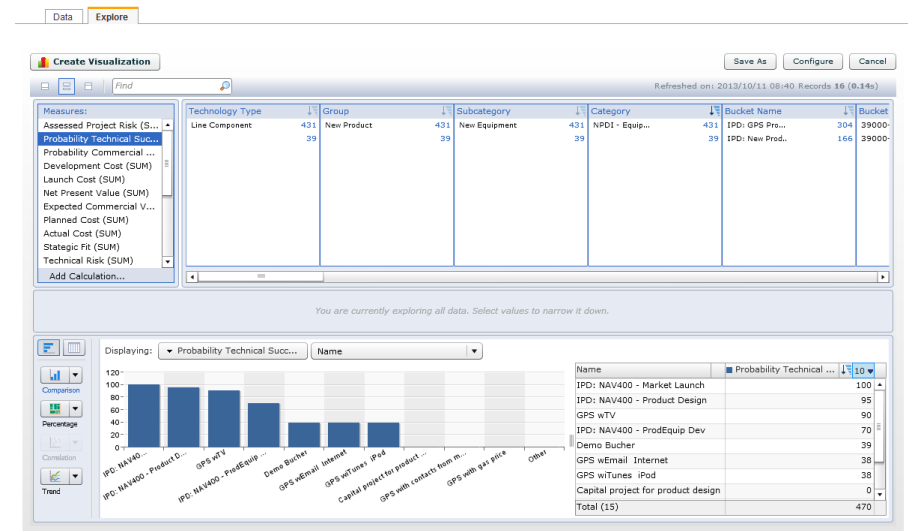
Monitor and analyze project performance with dashboard and SAP BO report.

View: * [Standard View] [Print Version] [Export] [Create] [Mass Update] [Delete] [Move To] [Advanced Filter] [Clear Filter] [Reporting] [SAP BusinessObjects Explorer]

Bucket Name	Name	ID	Type	Risk	Budget Status	Schedule Status	Staffing Status
			IPD*				
IPD: GPS Products	IPD: NAV400 - Product Design	39011	IPD - Product Design	⚠	🛑	🛑	✅
IPD: GPS Products	IPD: NAV400 - Prod/Equip Dev	39012	IPD - Prod/Equip Dev	⚠	🛑	🛑	✅
IPD: GPS Products	IPD: NAV400 - Market Launch	39013	IPD - Market Launch	⚠	✅	✅	✅
IPD: GPS Products	IDP Product design	39097	IPD - Product Design	✅	✅	🛑	✅
IPD: New Product PROPO...	GPS with speed cameras	3900121	IPD - Proposal	✅	✅	✅	✅
IPD: New Product PROPO...	GPS w/TV	39000	IPD - Proposal	⚠	✅	⚠	✅

Portfolio Dashboards

- Personalize-able Portfolio Dashboards (Filter, Field Selection,
- Tracking of
 - Risk,
 - Cost / Budget,
 - Schedule, Staffing
- Project KPIs
- Embedded Reporting (BCV, BusinessObjects, BI)



Monitoring after commercialization

Embedded reporting

Imagine

Design

Plan

Make

Service

Side Panel Reporting (BCV)

- Provide product related information in the context of Projects
- Predefined set of analytical content
 - Material Master Data
 - Sales Orders
 - Revenue Information
 - Inventory Information
 - Production Orders
 - Compliance Information
 - Quality Information
- Pre-fill of reporting parameters out of the business context

Item: IPD: NAV400 - Product Design

Save | Read Only | Financial and Capacity Planning | Print Fact Sheet | Project | Reporting Cockpit | Timeline Monitor | You can also

No Messages - Display Message Log

Select Content: SAP Standard Overview

IPD: Product Portfolio > IPD: PRODUCT PORTFOLIO > IPD: GPS Products > IPD: NAV400 - Product Design

39011 | Called From: Portfolio IPD: Product Portfolio | ID: 39011 | Name: IPD: NAV400 - Product Design | Type: IPD - Product Design | Budget Sta: Critical Under Budget | Risk: Critical Behind Schedule | Staffing Status: Properly Sta

PHASE 1: Product Design | PHASE 2: Sourcing/Testing | PHASE 3: Production Ramp-Up

Overview | Phases and Decisions | Deliverables | Relationships | Documents and Notes | Miscellaneous | Custom Component

General Information | Additional Information | Classification | Financial Information | Capacity Information

Key Information

Name: IPD: NAV400 - Product Design | ID: 39011 | Type: IPD - Product Design | Initiative Name: I - GPS w/TV capabili

Status: Created | Priority: | Description: | Remove Image | Escalation: | Proposal: |

Dates

Forecasted Start/Finish: 01.09.2010 / 28.02.2011 | Planned Start/Finish: 01.09.2010 / 28.02.2011 | Days Left Until Finish: -937 | Days Left Until Next Decision: 0

E S B

Demand Class: | Business Unit:

IPD: Product Portfolio > IPD: PRODUCT PORTFOLIO > IPD: GPS Products > IPD: NAV400 - Product Design

39011 | Called From: Initiative I - GPS w/TV capabilities | ID: 39011 | Name: IPD: NAV400 - Product Design | Type: IPD - Product Design | Risk: Critical Behind Schedule | Staffing Status: Properly Staffed

PHASE 1: Product Design | PHASE 2: Sourcing/Testing | PHASE 3: Production Ramp-Up

Overview | Phases and Decisions | Deliverables | **Relationships** | Documents and Notes | Miscellaneous | Custom

Dependencies | Object Links | Related Objects

Object Type: All Object Types | Identify Object

Export | Add Objects | Remove | Edit

Identification	Linked Object Description
NAV-003001 IPD00000	NAV 300 GPS Navigation System
NAV-001001	HAUPTPLATINE

Production Orders

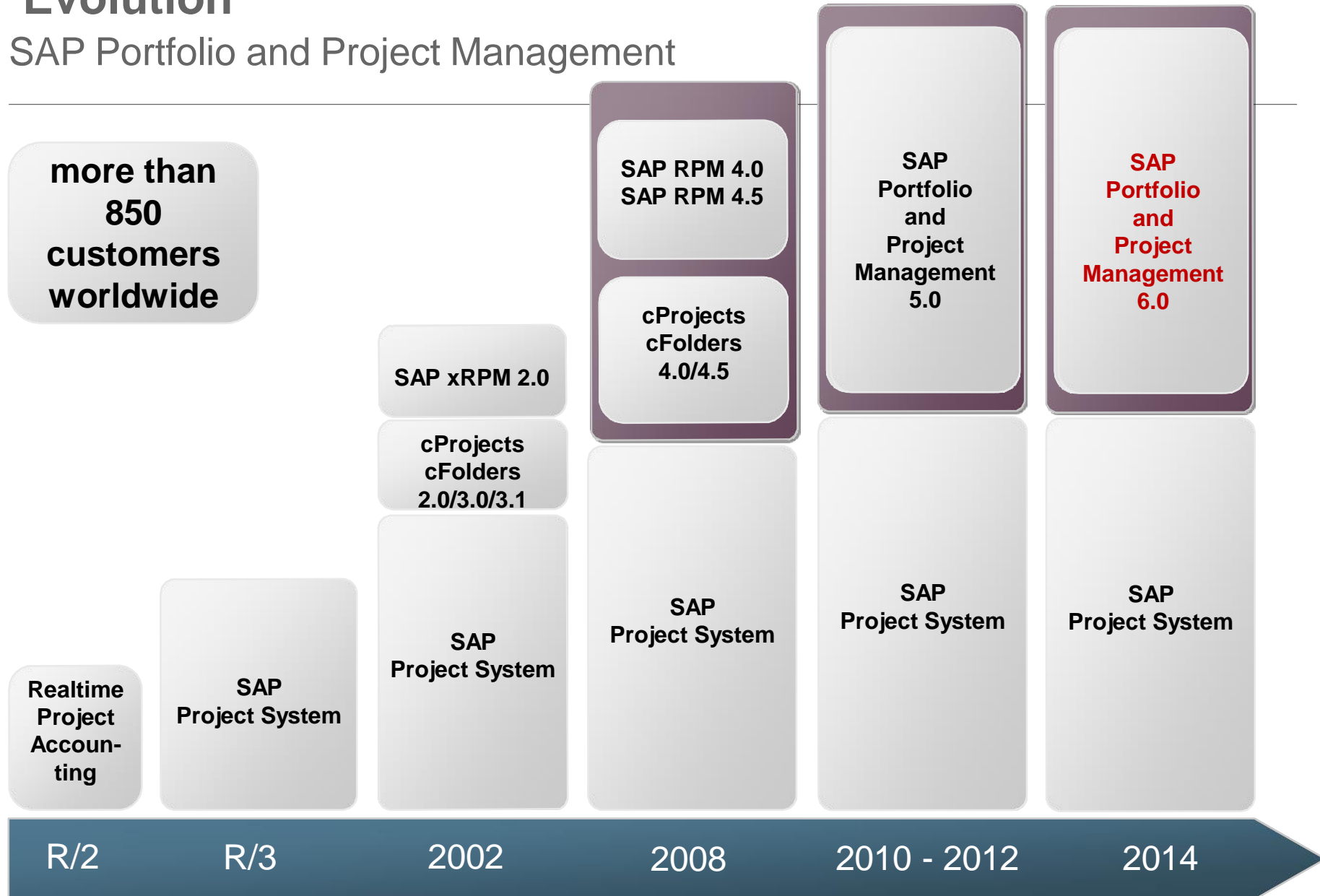
Location	Production Orders
New York	350
Dublin	700
Shanghai	650

Quality Notifications

Category	Percentage
Overheated	43%
Data loss	22%
Damage	17%
Unknown	10%
Other	8%

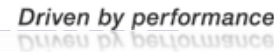
Evolution

SAP Portfolio and Project Management



SAP PPM Customers

We have many of global SAP PPM customers in various industries.



Reference

Tele-communication and Energy



“End-to-End project processes to optimize finance & unavailability at the leading player in Europe within renewable energy sector”

*SAP RPM & cProjects 4.0 support
project handbook & methods
Long-Term Planning, Unavailability
of turbines, risk evaluation
PM, Internal Orders
IT PPM Support*



“Project- & Portfolio Management at Corp. Systems Unit of the Nordic and Baltic telecommunications leader”

*SAP RPM 4.0
Implementation by the customer &
very low external consulting support
Showcase approach & phased
implementation at other business
units*



“Improved IT project visibility, collaboration & streamlined the processes at America’s most reliable electric utility”

*SAP RPM 4.0 & cProjects,
integrated to SAP FICO, HCM
30-60-90 Day Resource Visibility
Dynamic KPIs & Project Status
IT-Governance, Standard
Reporting*



1000+ Service, Telecommunication and Utility companies rely on SAP:



... to manage daily project operations and maximize the value of their project portfolios

Reference

Capital Project Portfolio Management for Oil&Gas, Mining Industry



“Integrated Long-Term Planning, Budget Process and Projects execution at the world’s largest platinum producer ”

*SAP RPM 4.0, SAP PS, MS-Project
Align strategy & capital spend
Understand resource & budget constraints. Integrated and auditable capital planning & monitoring*



“Prioritizing and Monitoring the Portfolio of 2000 Modifications to comply with Health, Safety & Environment requirements”

*SAP RPM 2.0, SAP PS, SAP PM
4.6 C Integration and creation of Portfolio Item from PM-Notifications
Collaboration Link to Teamsite
R/3 Transactions available in the Portal*



“Actively managing the Portfolio of Capital Projects and Investments at the Engen Refinery”

*SAP RPM 4.5 implementation at Refinery in Durban for capital projects in 6 month; Phased Rollout of Initiatives, Programs, Projects
PS-Integration across the business*



350+ Oil&Gas and Mining companies rely on SAP:



... to manage daily project operations and maximize the value of their capital project portfolios

Reference

Automotive Industry



Integrated portfolio and project management with SAP PPM 5.0 to SAP ERP



“...the SAP solution is a roadblock remover between silos”

„ SAP Portfolio and Project Management helped resources to be more productive and work on the most urgent projects „

SAP Portfolio and Project Management 5.0 (SAP PPM 5.0)



Running the R&D on SAP RPM 4.5 and upgrading to SAP Portfolio Management 5.0 to get benefit from an optimal integration into SAP ERP



Customers running SAP Portfolio and Project Management

Honeywell



MAHLE

Driven by performance

... to manage daily project operations and optimize projects across all areas

Reference

Consumer Products Industry



“Provide one IT project portal for project information at the world largest beverage company”

*Phased approach to migrate from multiple tools to one integrated tool
Initially deployed SAP RPM for process governance and reporting
Continuous enhancement and improvement*

The Coca-Cola Company



“Global New Product Development and Introduction - NPDI - at the world's most international tobacco group.”

Optimize the product portfolio with SAP RPM & cProjects. Global process & project methodology for portfolio, projects, documents, reporting; New Products & Modifications of Existing



“Enterprise Portfolio Management that helps to ensure that projects support the business strategy of a leading Dairy Company”

*Sophisticated RPM & cProjects 2.0 project completed in 9 month
Phased approach IT, R&D, others
One fully integrated solution to support full visibility and decision support*



1000+ Consumer Products companies rely on SAP:



Good Food, Good Life



... to manage daily project operations and optimize projects across all areas

Reference

Financial and Public Industry



“PPM for strategic business dealings and projects at the Federal Office of IT, Systems and Telecommunication”

RPM as Service used for Resource-mgmt., IT, Strategic Planning and political Dealings. SAP RPM 4.0, cProjects, CATS, SAP PS, MSPro.



Bundesamt für Informatik und Telekommunikation BIT
Office fédéral de l'informatique et de la télécommunication OFIT
Ufficio federale dell'informatica e della telecomunicazione UFIT
Uffizi federal d'informatica e telecomunicaziun UFIT



“SAP RPM to speed up IT planning and project reporting, replacing MS-Access with a packaged implementation”

SAP RPM linked Enterprise Planning and IT – Strategy Workflow support for phases, gates IT cost center budgets automatically derived from PPM/SEM - Integration



“Integrated and efficient Requirement-Management with RPM at the 3rd biggest Swiss bank”

SAP RPM 4.5 for collection, bundling, prioritization and management of requirements; Integrated with SAP Financials, Project System and Invest. Mgmt.



500+ Financial and Public Service organizations rely on SAP:



... to manage daily project operations and maximize the value of their project portfolios



Thank you